

Installation Instructions for Rake Kit

The Safety and Quality of this kit depends on correct installation. Read and follow all instructions carefully.

CAREFULLY INSPECT EACH PART BEFORE INSTALLING IT. We are not responsible for damage caused by installing the wrong part. If you're not sure, give us a call at 662 449-0956

Notice: Correct function of the brake system is necessary for vehicle safety. Therefore this installation should be only made by Certified motorcycle mechanic. Do not modify the delivered parts. Damaged or bent parts should not be used or repaired in any way. If there are any questions please contact your distributor: Chopper Supply LLC - 662-449-0956

Note: Use thread lock on all bolted connections.

1. Secure Motorcycle on lift or suitable jack.
2. Disconnect negative battery cable to disable electrical system.
3. Remove front wheel, front fender, gas tank and brake body.
4. Loosen lower triple tree clamp screws and remove fork slider assembly.
5. Remove handlebars and headlight.
6. Remove triple tree.
7. **Top and bottom Bearings and bearings races must be removed.**
8. Clean the inside of the steering head, be sure no burs have been left in the bearing race seat.
9. Place a small amount of grease on the inside of the top bearing race seat. Then set the top tree assembly (3) on the steering head.
10. Remove the fork stops (8) and insert the stem bolt (10) through the bottom of the adapter (7) and as you insert it into the bottom of the steering head, tighten the screw into the shaft of the top tree assembly. This will seat the adapter and the top tree assembly into the steering head. Torque to 148 ftlbs (Make sure you position the adapter in the steering head so that it is facing straightahead when tightening the stem. If it's not straight after tightening, loosen the stem bolt and with a heavy rubber hammer, tap the side of the adapter to make it straight.
11. With the offset adapter centered, remove the stem bolt, clean any lubricate from the bolt, apply thread lock to the bolt and reinstall. Torque to 148 ftlbs. (This torque amount must be reached!)
12. Remove fork tubes from lower legs and replace with longer fork tubes (6). Be sure to remove the o-ring from the original tube plug and place on the tube plugs (4) included in the kit (if provided) Note: Refill with the factory recommended amount of fork oil. Refer to service manual for you year motorcycle for the exact amount of oil. (Extra oil is NOT needed for extended tube). Use stock pre-load when assembling forks. Spring spacers (5) included may, or may not need shortened.
13. Remove bearing cover (14) from the underside of lower tree and position the tree so it's bearing will slide up on the shaft of the offset adapter. Install retaining clip (13) on shaft to hold lower tree in place for next step. **(Use extreme caution installing fork tubes, according to your repair manual. A second person to help align the trees during this step is recommended. We are not responsible for scratched tubes)**

14. Align locking cams (12) in bottom tree so the tubes can slide thru. Insert the fork tubes thru the trees and install the fork tube caps (1) and washer (2). *Locking cam should have a min of 1/4" gap between the 2 halves to allow the tube to slide thru.*
15. Position the bottom triple tree on the adapter shaft leaving at least 1/8" of space between the bottom of the adapter block and the bearing. *(see figure 2)*
16. Tighten cam screws with specified torque.
17. Install the Handlebars and risers.
18. Install the caliper
19. Install the fender using the new spacer and bolts. (if provided)
20. Install the new brake line and fittings.
21. Remove the brake rotor from your wheel and install the rotor spacer between the rotor and hub. (if provided)
22. Install the front wheel using the new axel and wheel spacer (if provided), add brake fluid and bleed the brake system.
23. Install Headlight.

Check all bolts for correct torque.

Torque Specs (ft lbs)		Special Tools Needed
Locking Cam Bolt	30-35	Seal tools Torque Wrench Bearing Race Removal Tool Parts Not Included in kit. Fork Oil Fork Seals
Front Axel	25-30	
Front Axle Clamp Bolts	11-15	
Riser Bolts	40-50	
Stem Bolt	148	
Caliper Mounting Bolts	18-29	
Fork Caps	60-70	
Banjo fittings (brake line)	15-18	

Item	Description	QTY.
1	Tube Cap	2
2	Tube Cap Washer	2
3	Upper Tree	1
4	Tube Plug (41mm use OEM)	2
5	Spring Spacer	2
6	Fork Tube	2
7	Offset Adapter	1
8	Fork Stop	2
9	Fork Stop Bolt	2
10	Stem Bolt	1
11	Lower Tree	1
12	Locking Cam	2
13	Retaining Clip	1
14	Lower Bearing Cover	1
15	Lower Bearing Cover Screw	3

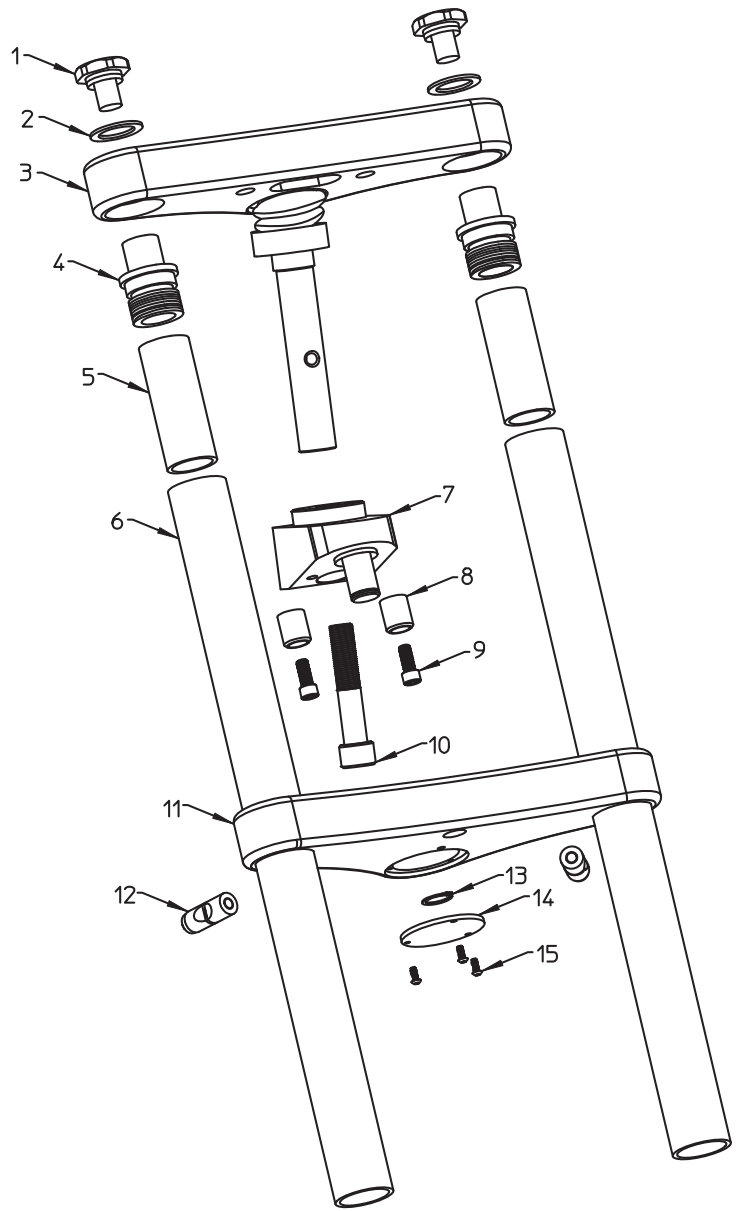


Figure 2

